

The Anna Maria, Sanibel & Gasparilla

Exterior Features:

- Fiber-reinforced concrete slab, steel-reinforced concrete block construction with textured finish
- Impact-resistant 6 panel solid front door
- Engineered hurricane-resistant truss system
- Under truss lanai per plan
- Raised-panel designer steel garage door
- Tamko® Heritage dimensional roof shingles (or equal) with 15-year manufacturer warranty & 30-year lifetime expectancy
- Aluminum fascia and 12" wide soffit
- Concrete driveway, walkway, entry & lanai
- Spraycrete lanai floor
- Sherwin Williams Loxon® Primer with SuperPaint® exterior paint
- Landscape package, Bahia sod & irrigation system
- 2 hose bibs
- Attached 2 car garage door, pre-wired for opener
- Seamless gutters on front elevation
- Two GFCI protected exterior electrical outlets
- Designer paint schemes

Energy Features:

- PGT® insulated Low E windows & slider doors
- Digital programmable thermostat
- Lennox® 14 SEER high-efficiency HVAC system (or equal)
- 200 amp electrical service
- R30 insulation in attic
- A/C supply vents in walk-in closets
- Insulated attic ductwork
- 40-gallon energy efficient water heater
- Six mil plastic vapor-barrier under all concrete floors including garage & lanai
- Exterior vented exhaust fans in all baths

- Washer/dryer hook up connection
- Water treatment system included on all well water supplied homesites

Design Features:

- Moen® plumbing fixtures throughout
- 30" contemporary Shaker-style cabinets
- Mirrors over full-width of vanities 42" high
- Laminate countertops in kitchen & bathrooms
- Vaulted ceilings per plan
- 18" x 18" tile in foyer, kitchen, utility & bathrooms
- Carpet in main living area, bedrooms & closets
- Large master bedroom with walk-in closet
- Frigidaire® or Whirlpool® stainless steel range, microwave & dishwasher
- Skip trowel texture on walls & ceilings

Convenience & Safety Features:

- Smoke & carbon monoxide battery-backed detectors
- Two pre-wired internet/cable locations
- Arc-fault protected circuit breakers
- Tamper-resistant outlets
- GFCI circuits in all designated areas

Christopher Alan Homes Difference:

- Strong company backed by a 50-year legacy of quality construction
- Commitment to customer service through clear communication & focused follow-through
- One-year full warranty & ten-year structural warranty on your home
- All concrete block construction with interior wood framing

ChristopherAlanHomes.com | 239.800.2164



ALL INVENTORY SOLD INCLUDE FEATURES AT THE TIME OF CONTRACT UNLESS DOCUMENTED OTHERWISE. SPECIFICATIONS ARE SUBJECT TO CHANGE WITHOUT NOTICE. ORAL REPRESENTATIONS CANNOT BE RELIED UPON AS CORRECTLY STATING THE REPRESENTATIONS OF THE DEVELOPER (SELLER). FOR CORRECT REPRESENTATIONS, REFERENCE SHOULD BE MADE TO THE SALES CONTRACT (AGREEMENT).

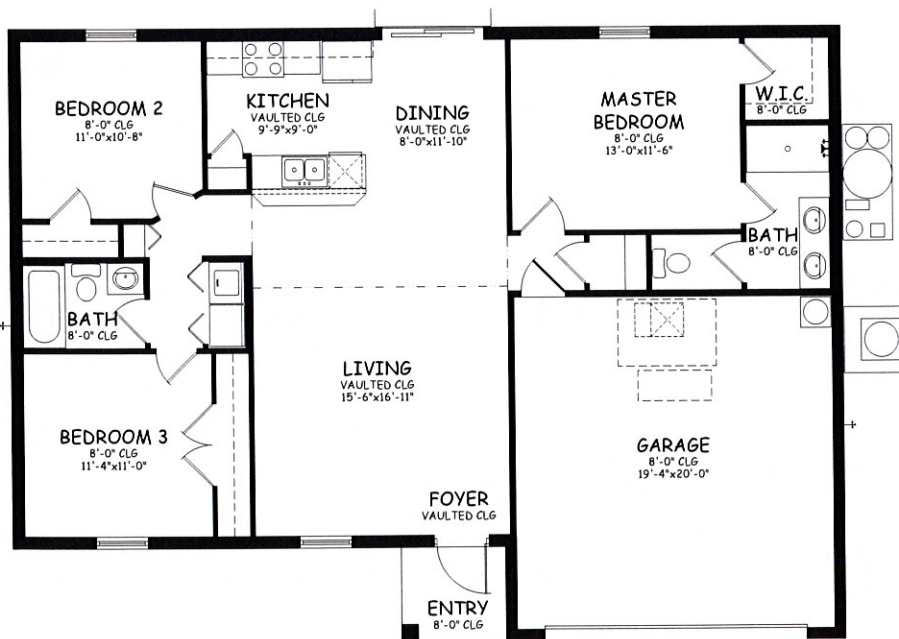
THE ANNA MARIA



3 Bedroom, 2 Bath with 2-Car Garage

Square Footage

Air Conditioned	1,285 sq. ft.
Entry	36 sq. ft.
Garage	420 sq. ft.
<hr/>	
Total Area	2,093 sq. ft.

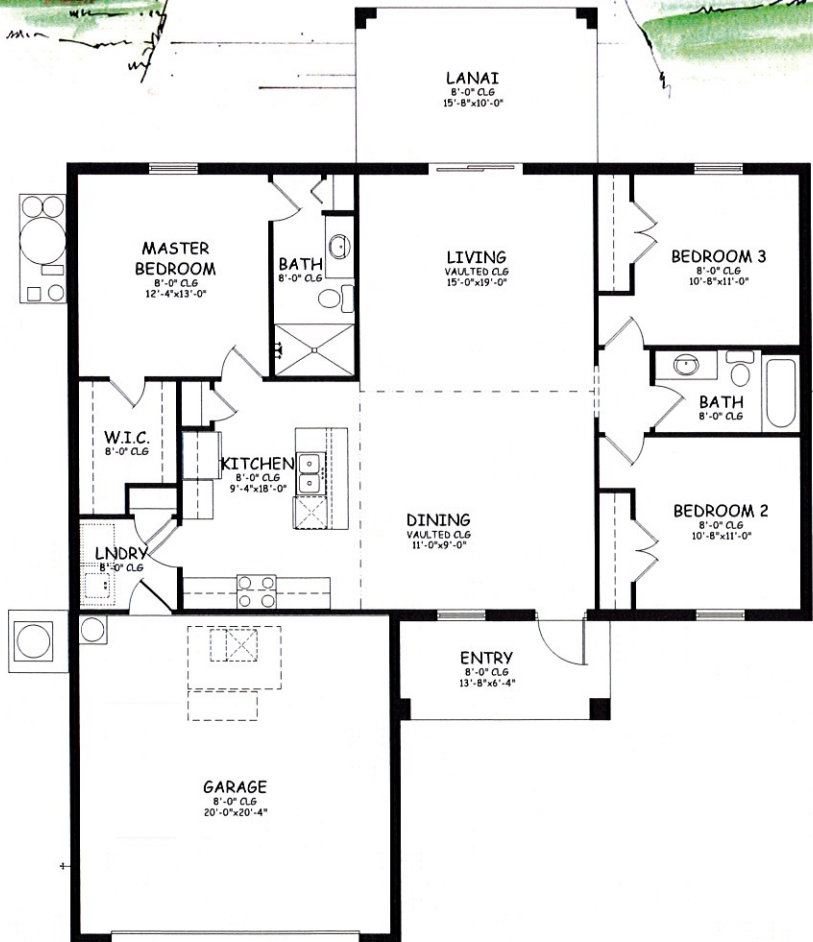
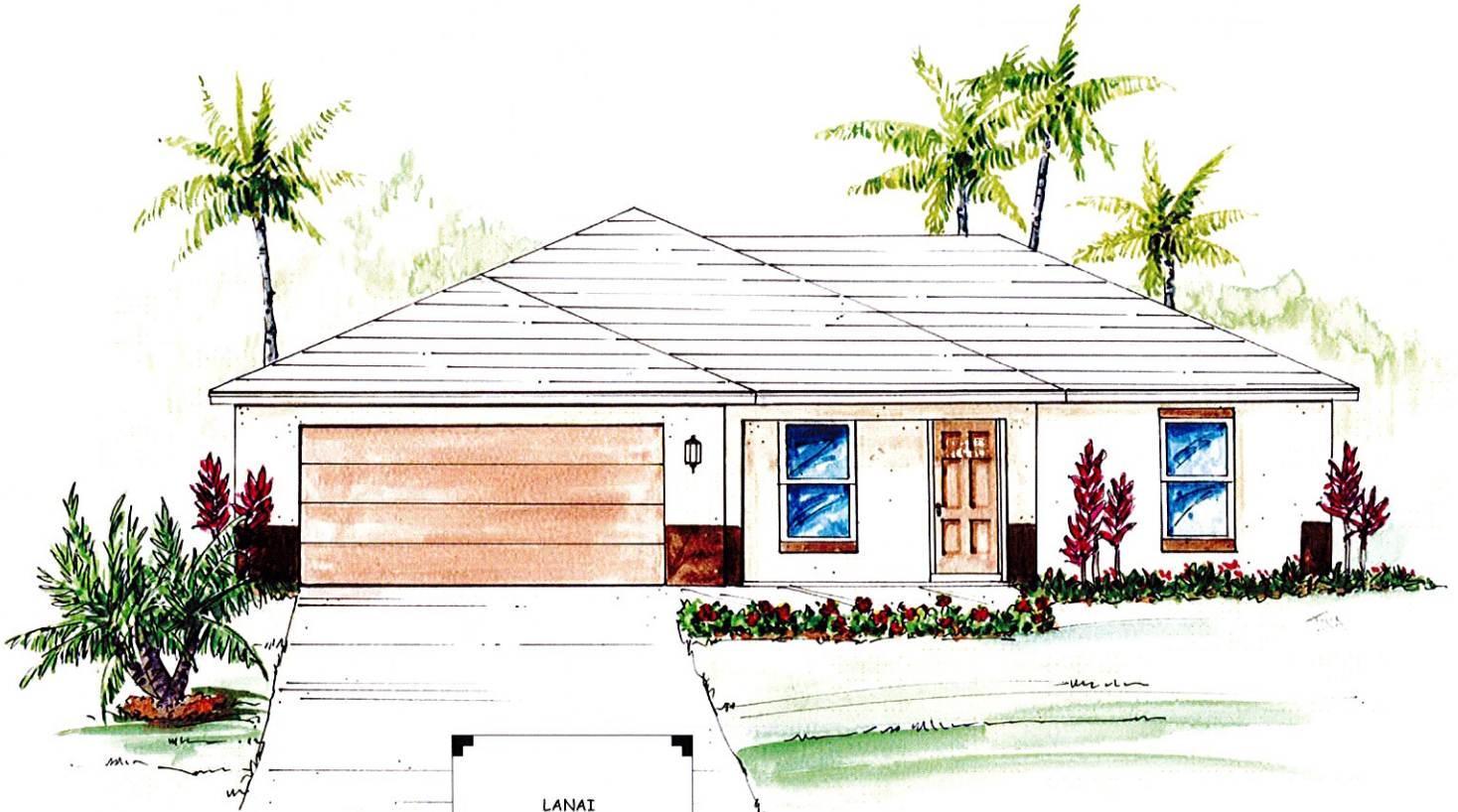


CHRISTOPHER ALAN HOMES

ChristopherAlanHomes.com | 239.800.2164

©2018 CHRISTOPHER ALAN HOMES. FEATURES, FLOOR PLANS, SQUARE FOOTAGES AND SPECIFICATIONS ARE APPROXIMATE AND SUBJECT TO CHANGE WITHOUT NOTICE AND MAY VARY FROM THE HOMES AS BUILT.

THE SANIBEL



3 Bedroom, 2 Bath with 2-Car Garage

Square Footage

Air Conditioned	1,399 sq. ft.
Lanai.....	157 sq. ft.
Entry	87 sq. ft.
Garage	450 sq. ft.
Total Area	2,093 sq. ft.



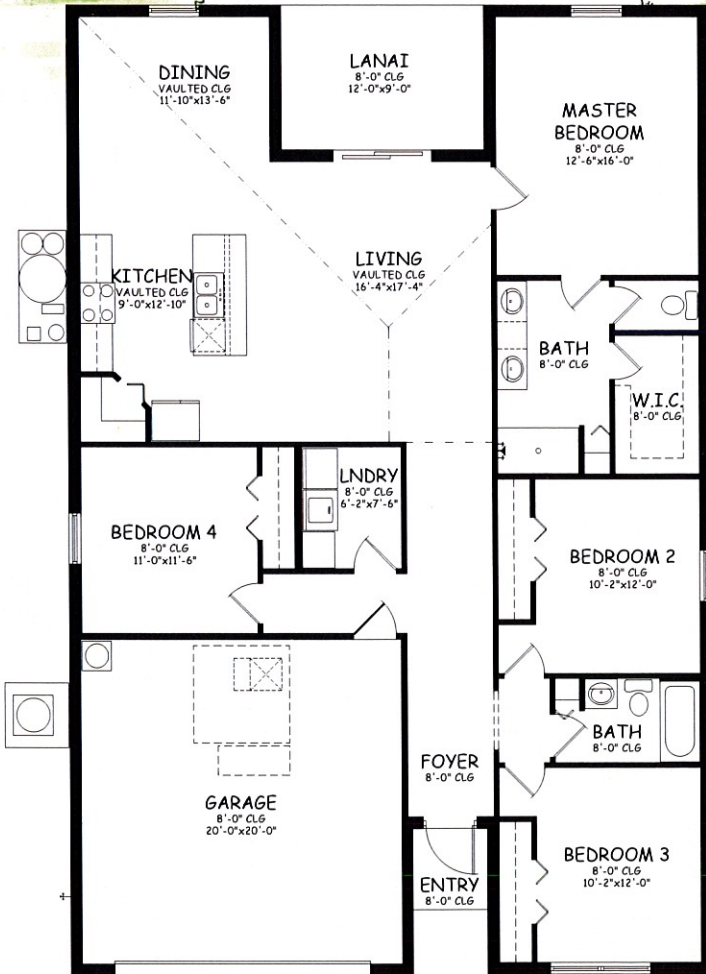
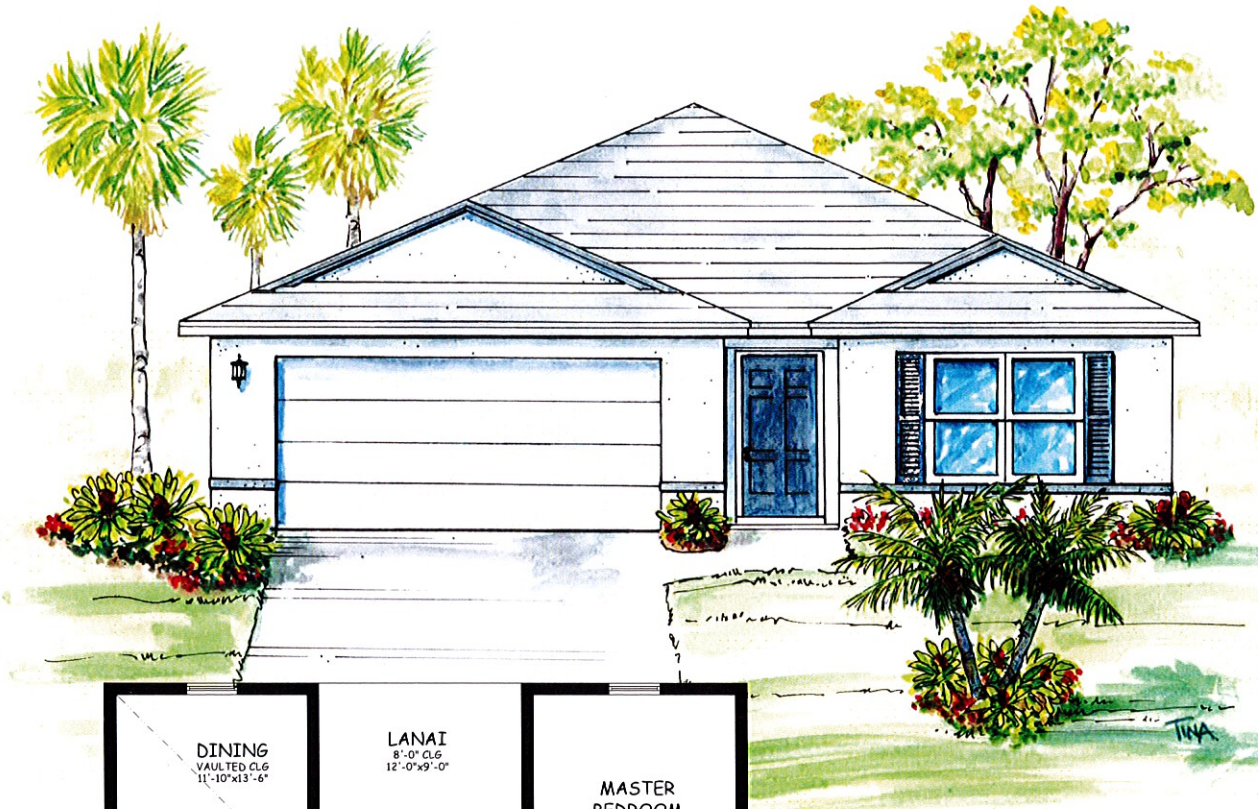
CHRISTOPHER ALAN HOMES

ChristopherAlanHomes.com | 239.800.2164



©2018 CHRISTOPHER ALAN HOMES. FEATURES, FLOOR PLANS, SQUARE FOOTAGES AND SPECIFICATIONS ARE APPROXIMATE AND SUBJECT TO CHANGE WITHOUT NOTICE AND MAY VARY FROM THE HOMES AS BUILT.

THE GASPARILLA



4 Bedroom, 2 Bath with 2-Car Garage

Square Footage

Air Conditioned	1,810 sq. ft.
Lanai	230 sq. ft.
Entry	114 sq. ft.
Garage	434 sq. ft.
Total Area	2,381 sq. ft.



CHRISTOPHER ALAN HOMES

ChristopherAlanHomes.com | 239.800.2164



©2018 CHRISTOPHER ALAN HOMES. FEATURES, FLOOR PLANS, SQUARE FOOTAGES AND SPECIFICATIONS ARE APPROXIMATE AND SUBJECT TO CHANGE WITHOUT NOTICE AND MAY VARY FROM THE HOMES AS BUILT.

The Cayo Costa, Pineland & St. Augustine

Exterior Features:

- Enhanced architectural features including arch details & stone accents on front elevation
- Fiber-reinforced concrete slab, steel-reinforced concrete block construction with textured finish
- Impact-resistant 6 panel solid front door
- Engineered hurricane-resistant truss system
- Under truss lanai per plan
- Raised-panel designer steel garage door
- Tamko® Heritage dimensional roof shingles (or equal) with 15-year manufacturer warranty & 30-year lifetime expectancy
- Aluminum fascia and 12" wide soffit
- Concrete driveway, walkway, entry & lanai
- Spraycrete lanai floor
- Sherwin Williams Loxon® Primer with SuperPaint® exterior paint
- Landscape package, Bahia sod & irrigation system
- 2 hose bibs
- Attached 2 or 3 car garage door, pre-wired for opener
- Seamless gutters on front elevation
- Two GFCI protected exterior electrical outlets
- Designer paint schemes

Energy Features:

- PGT® insulated Low E windows & slider doors
- Digital programmable thermostat
- Lennox® 14 SEER high-efficiency HVAC system (or equal)
- 200 amp electrical service
- R30 insulation in attic
- A/C supply vents in walk-in closets
- Insulated attic ductwork
- 40-gallon energy efficient water heater
- Six mil plastic vapor-barrier under all concrete floors including garage & lanai

- Exterior vented exhaust fans in all baths
- Washer/dryer hook up connection
- Water treatment system included on all well water supplied homesites

Design Features:

- Moen® plumbing fixtures throughout
- 36" contemporary Shaker-style cabinets
- Mirrors over full-width of vanities 42" high
- Laminate countertops in kitchen & bathrooms
- Vaulted ceilings per plan
- 18" x 18" tile in foyer, kitchen, utility & bathrooms
- Tile shower surround in master bath
- Carpet in main living area, bedrooms & closets
- Large master bedroom with walk-in closet
- Frigidaire® or Whirlpool® stainless steel range, microwave & dishwasher
- Skip trowel texture on walls & ceilings

Convenience & Safety Features:

- Smoke & carbon monoxide battery-backed detectors
- Two pre-wired internet/cable locations
- Arc-fault protected circuit breakers
- Tamper-resistant outlets
- GFCI outlets in all designated areas

Christopher Alan Homes Difference:

- Strong company backed by a 50-year legacy of quality construction
- Commitment to customer service through clear communication & focused follow-through
- One-year full warranty & ten-year structural warranty on your home
- All concrete block construction with interior wood framing






ChristopherAlanHomes.com | 239.800.2164



ALL INVENTORY SOLD INCLUDE FEATURES AT THE TIME OF CONTRACT UNLESS DOCUMENTED OTHERWISE. SPECIFICATIONS ARE SUBJECT TO CHANGE WITHOUT NOTICE. ORAL REPRESENTATIONS CANNOT BE RELIED UPON AS CORRECTLY STATING THE REPRESENTATIONS OF THE DEVELOPER (SELLER). FOR CORRECT REPRESENTATIONS, REFERENCE SHOULD BE MADE TO THE SALES CONTRACT (AGREEMENT).

The Cayo Costa, Pineland & St. Augustine





Exterior Features:

- Enhanced architectural features including arch details & stone accents on front elevation
- Fiber-reinforced concrete slab, steel reinforced concrete block construction with textured finish
-  Impact-resistant full-view glass front door
- Engineered hurricane-resistant truss system
- Under truss lanai
- Raised-panel designer steel garage door
- Tamko® Heritage dimensional roof shingles (or equal) with 15-year manufacturer warranty & 30-year lifetime expectancy
- Aluminum fascia and 12" wide soffit
-  Paver driveway, walkway & entry
-  Epoxy-coated garage floor
-  Spraycrete lanai floor
- Sherwin Williams Loxon® Primer with SuperPaint® exterior paint
- Landscaping package, Bahia sod & irrigation system
- 2 hose bibs
-  Attached 2 or 3 car garage per plan with overhead door opener with remote
- Seamless gutters on front elevation
- Two GFCI protected exterior electrical outlets
- Designer paint schemes

Energy Features:

- PGT® insulated Low E windows & slider doors
- Digital programmable thermostat
- Lennox® 14 SEER high-efficiency HVAC system (or equal)
- 200 amp electrical service
- R30 insulation in attic
- A/C supply vents in walk-in closets
- Insulated attic ductwork
- 40-gallon energy efficient water heater
- Six-mil plastic vapor-barrier under all concrete floors including garage & lanai
- Exterior vented exhaust fans in all baths
- Washer/dryer hook up connection
- Water treatment system included on all well water supplied homesites

Design Features:

- Moen® plumbing fixtures throughout
- Dual master sinks per plan
-  Tile shower surround in master bath & guest baths
-  36" contemporary Shaker-style cabinets with soft-close doors & crown
- Mirrors over full-width of vanities 42" high
-  Granite countertops in kitchen & bathrooms
- Vaulted ceilings per plan
- 18" x 18" tile throughout all main living areas
- Large master bedroom with walk-in closet
-  Frigidaire® or Whirlpool® stainless steel appliance package, including refrigerator
- Skip trowel texture on walls & ceilings

Convenience & Safety Features:

- Smoke & carbon monoxide battery-backed detectors
- Two pre-wired internet/cable locations
- Arc-fault protected circuit breakers
- Tamper-resistant outlets
- GFCI outlets in all designated wet areas

Christopher Alan Homes Difference:

- Strong company backed by a 50-year legacy of quality construction
- Commitment to customer service through clear communication & focused follow-through
- One-year full warranty & ten-year structural warranty on your home
- All concrete block construction with interior wood framing

Additional Grand Features Include:

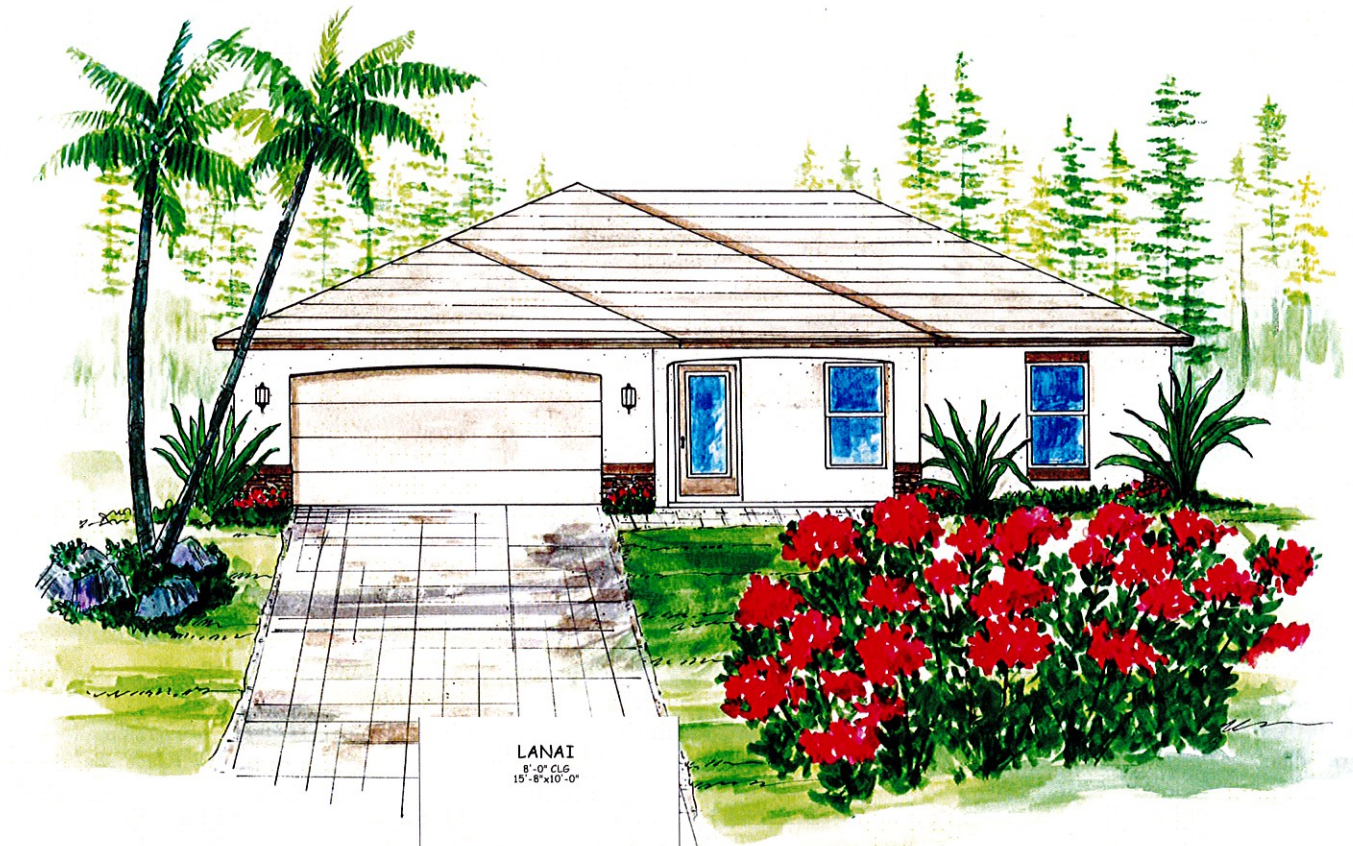
- Three car garage
- 9'4" ceilings
- Tray ceilings in great room & master
- 4 recessed can lights in great room
- 2 pre-wire pendant lights at kitchen island
- 8 foot interior and exterior doors including sliding glass doors
- Enhanced landscaping and irrigation package

ChristopherAlanHomes.com | 239.800.2164

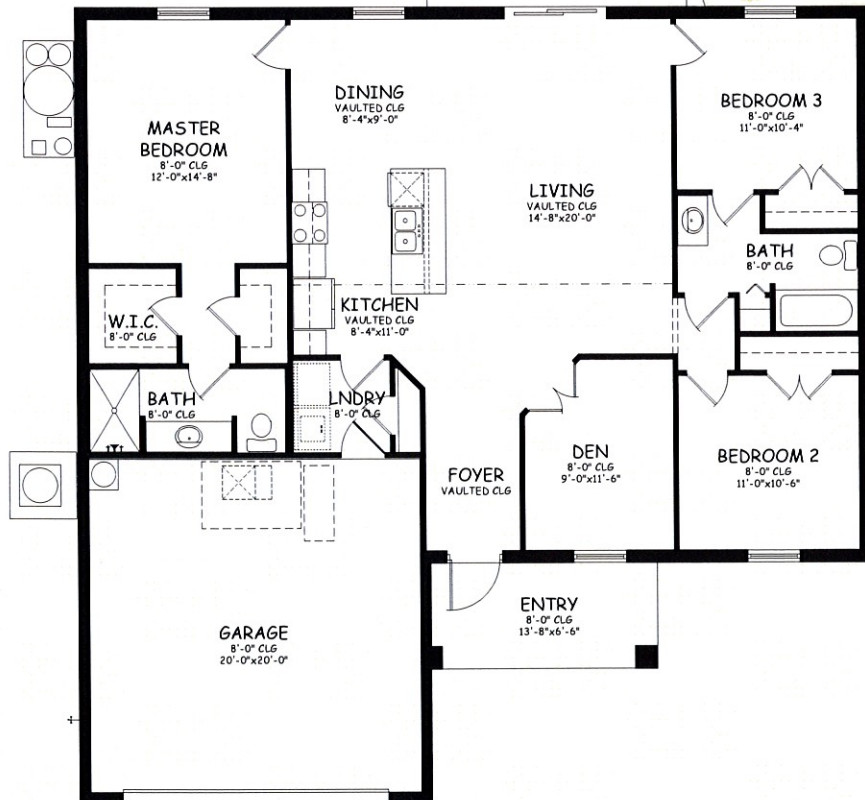


ALL INVENTORY SOLD INCLUDE FEATURES AT THE TIME OF CONTRACT UNLESS DOCUMENTED OTHERWISE. SPECIFICATIONS ARE SUBJECT TO CHANGE WITHOUT NOTICE. ORAL REPRESENTATIONS CANNOT BE RELIED UPON AS CORRECTLY STATING THE REPRESENTATIONS OF THE DEVELOPER (SELLER). FOR CORRECT REPRESENTATIONS, REFERENCE SHOULD BE MADE TO THE SALES CONTRACT (AGREEMENT).

THE CAYO COSTA



LANAI
8'-0" CLG
15'-8"x10'-0"



3 Bedroom, 2 Bath with Den & 2-Car Garage

Square Footage

Air Conditioned	1,469 sq. ft.
Lanai.....	157 sq. ft.
Entry.....	87 sq. ft.
Garage.....	437 sq. ft.
<hr/>	
Total Area	2,150 sq. ft.



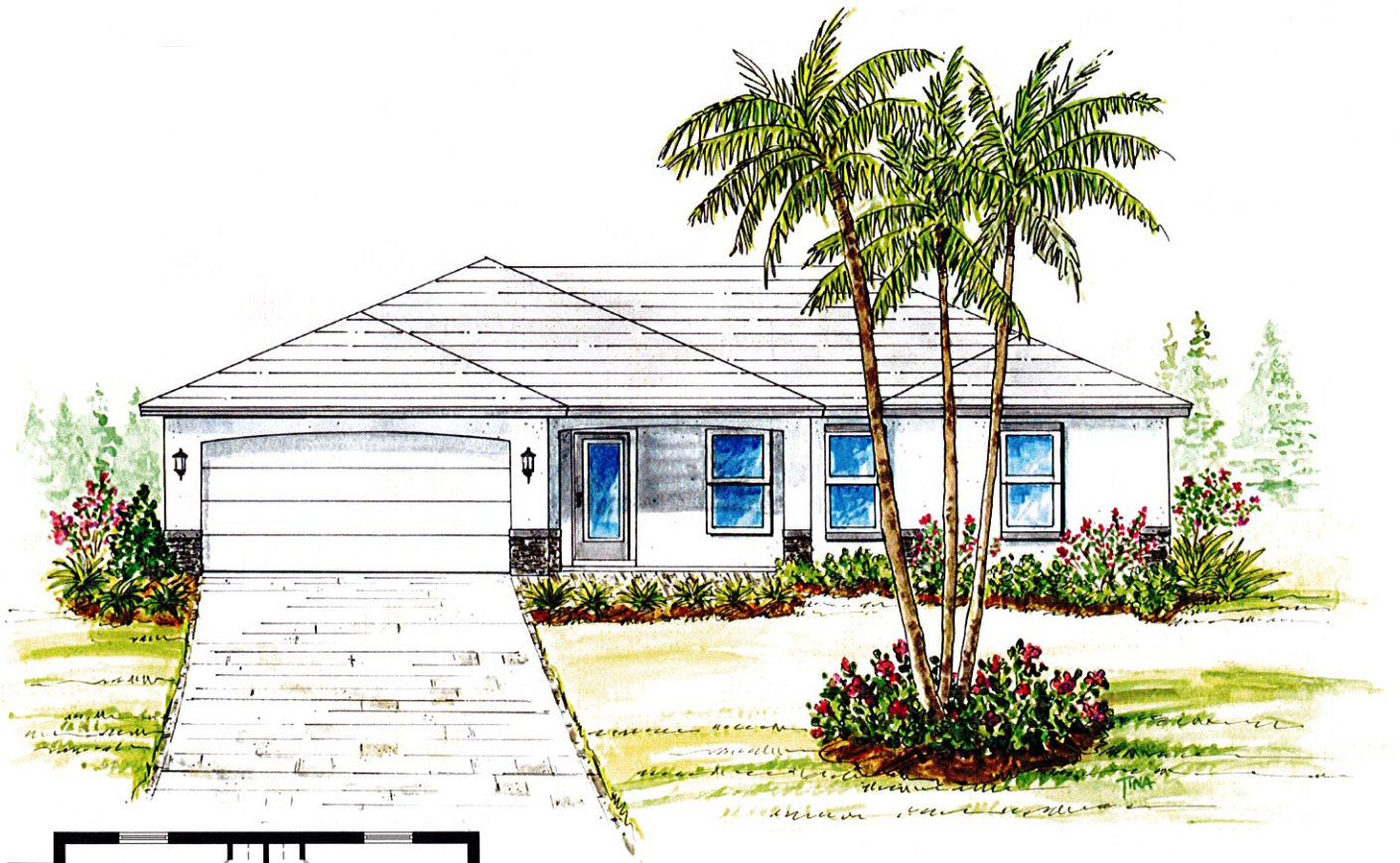
CHRISTOPHER ALAN HOMES

ChristopherAlanHomes.com | 239.800.2164



©2018 CHRISTOPHER ALAN HOMES. FEATURES, FLOOR PLANS, SQUARE FOOTAGES AND SPECIFICATIONS ARE APPROXIMATE AND SUBJECT TO CHANGE WITHOUT NOTICE AND MAY VARY FROM THE HOMES AS BUILT.

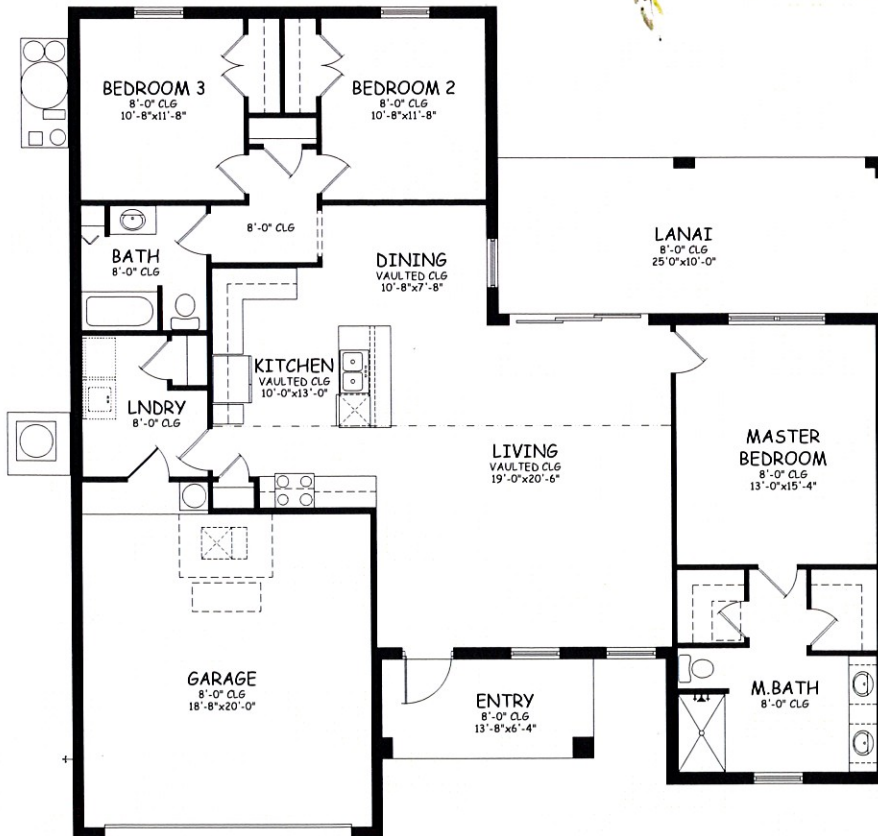
THE PINELAND



3 Bedroom, 2 Bath with 2-Car Garage

Square Footage

Air Conditioned	1,619 sq. ft.
Lanai	250 sq. ft.
Entry	87 sq. ft.
Garage	426 sq. ft.
<hr/>	
Total Area	2,382 sq. ft.



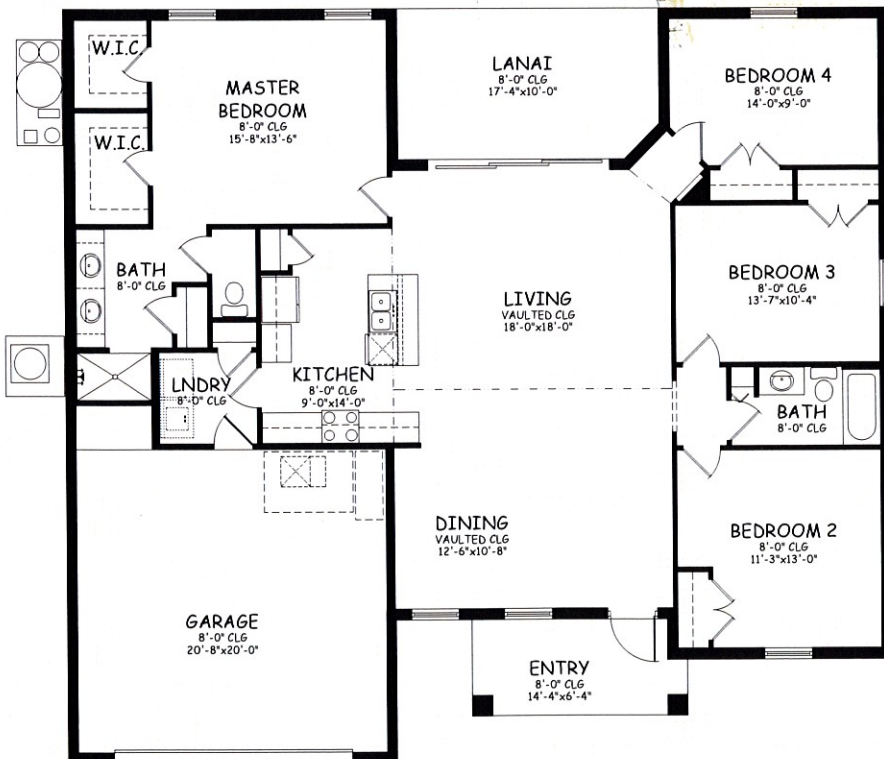
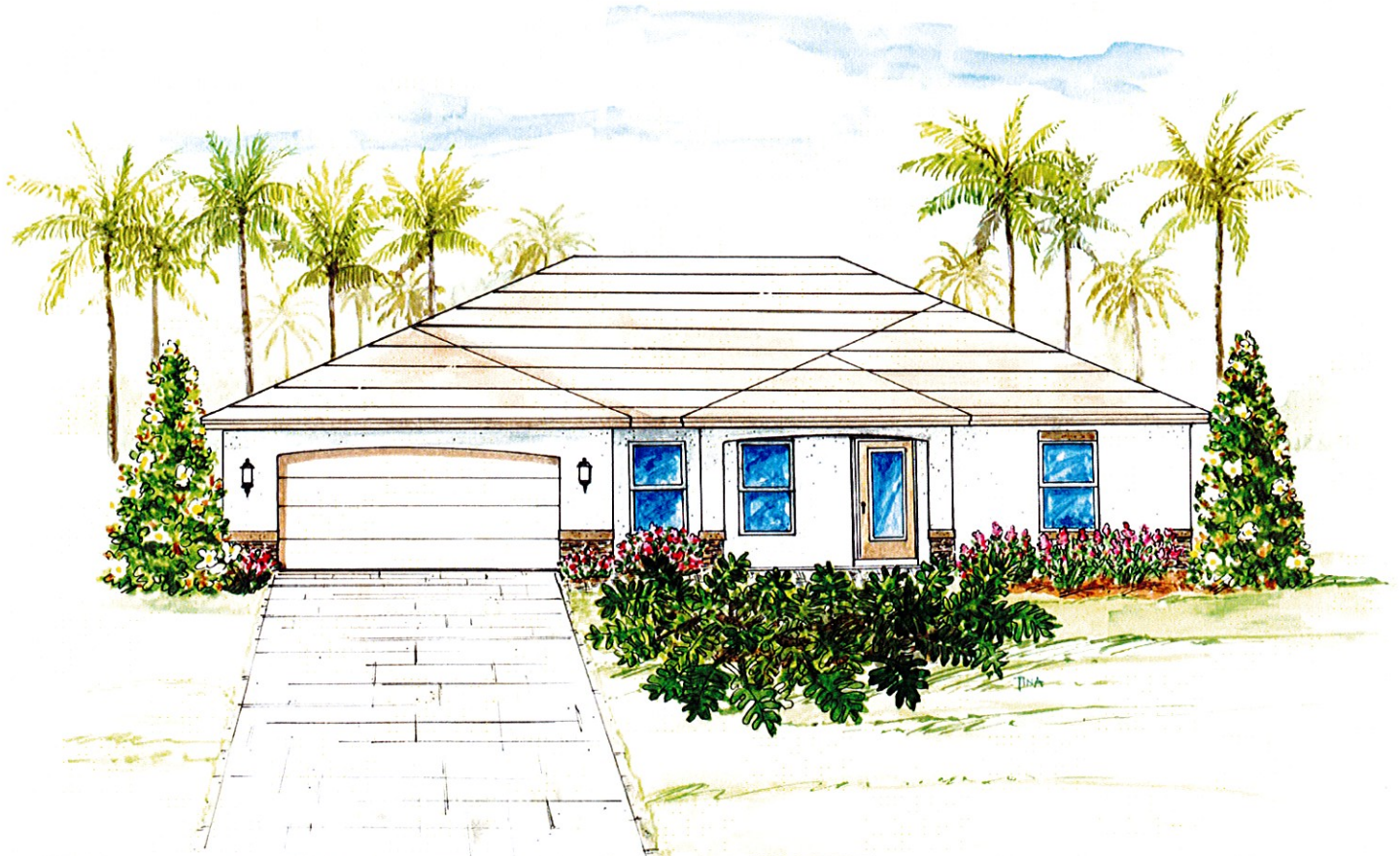
CHRISTOPHER ALAN HOMES

ChristopherAlanHomes.com | 239.800.2164



©2018 CHRISTOPHER ALAN HOMES. FEATURES, FLOOR PLANS, SQUARE FOOTAGES AND SPECIFICATIONS ARE APPROXIMATE AND SUBJECT TO CHANGE WITHOUT NOTICE AND MAY VARY FROM THE HOMES AS BUILT.

THE ST. AUGUSTINE



4 Bedroom, 2 Bath with 2-Car Garage

Square Footage

Air Conditioned	1,829 sq. ft.
Lanai	171 sq. ft.
Entry	87 sq. ft.
Garage	464 sq. ft.
Total Area	2,551 sq. ft.



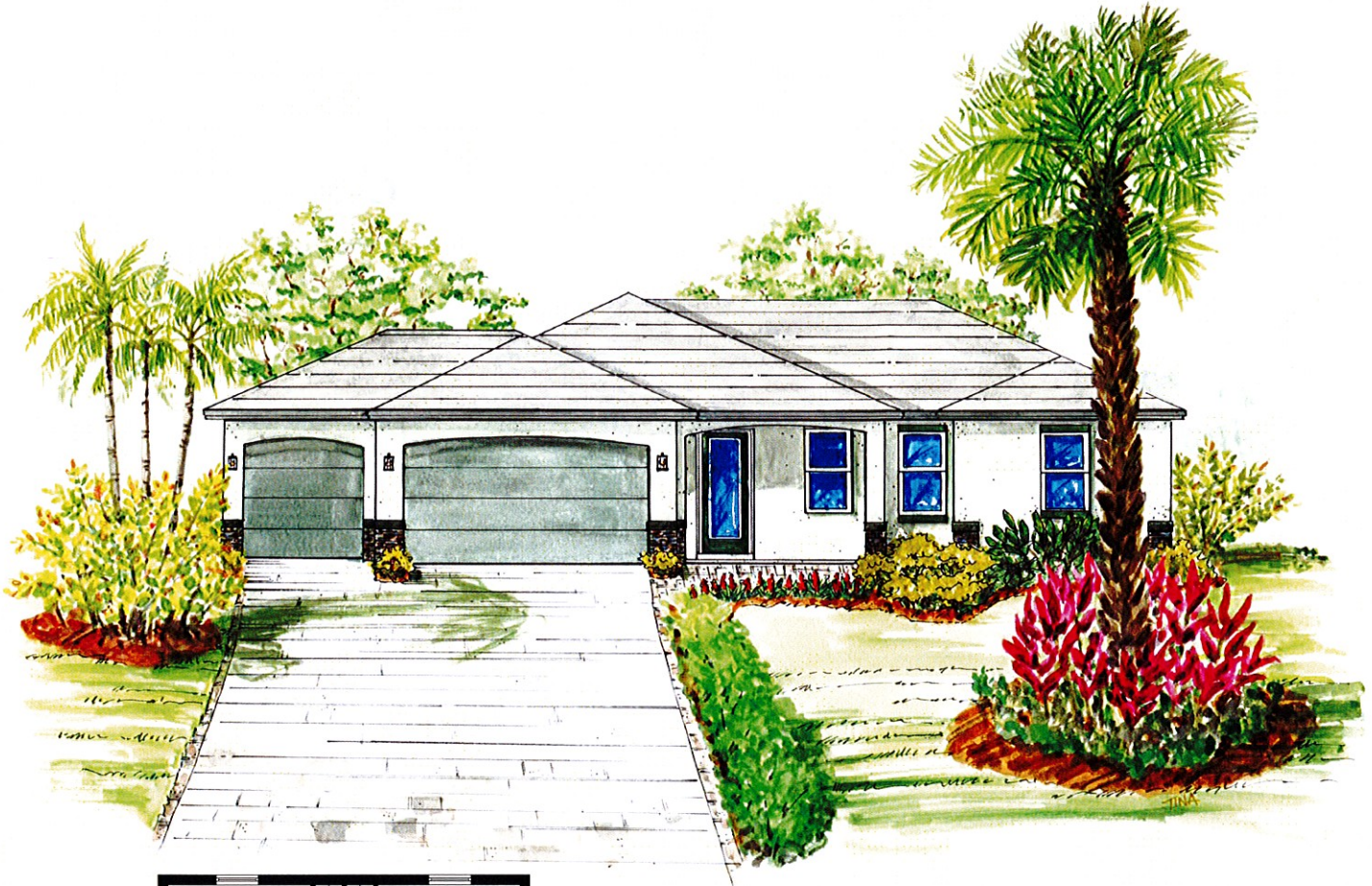
CHRISTOPHER ALAN HOMES

ChristopherAlanHomes.com | 239.800.2164



©2018 CHRISTOPHER ALAN HOMES. FEATURES, FLOOR PLANS, SQUARE FOOTAGES AND SPECIFICATIONS ARE APPROXIMATE AND SUBJECT TO CHANGE WITHOUT NOTICE AND MAY VARY FROM THE HOMES AS BUILT.

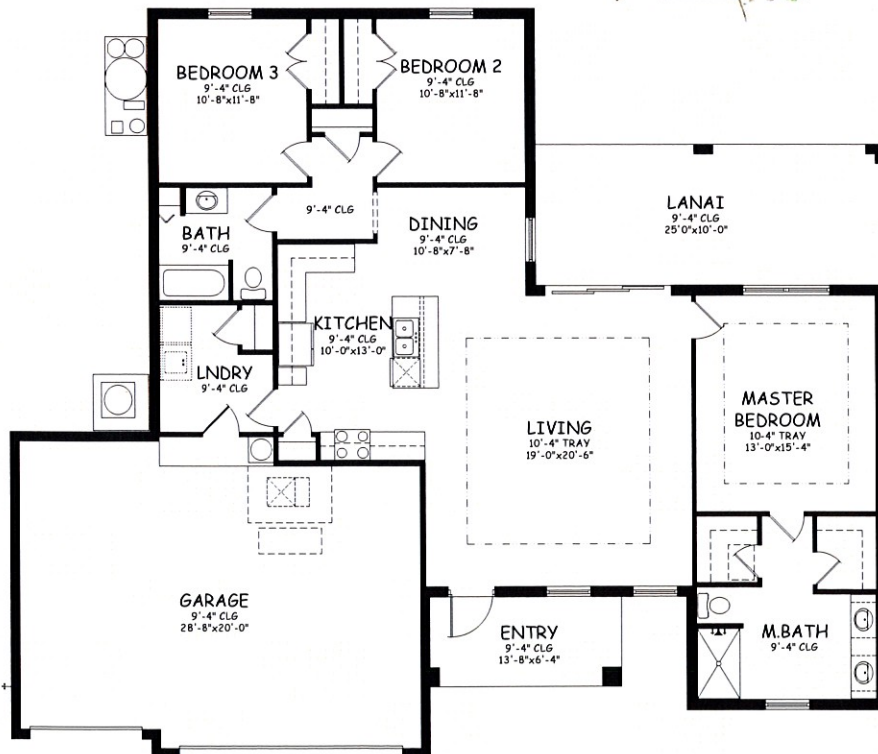
THE GRAND PINELAND



3 Bedroom, 2 Bath with 3-Car Garage

Square Footage

Air Conditioned	1,619 sq. ft.
Lanai.....	250 sq. ft.
Entry	87 sq. ft.
Garage	642 sq. ft.
Total Area	2,598 sq. ft.



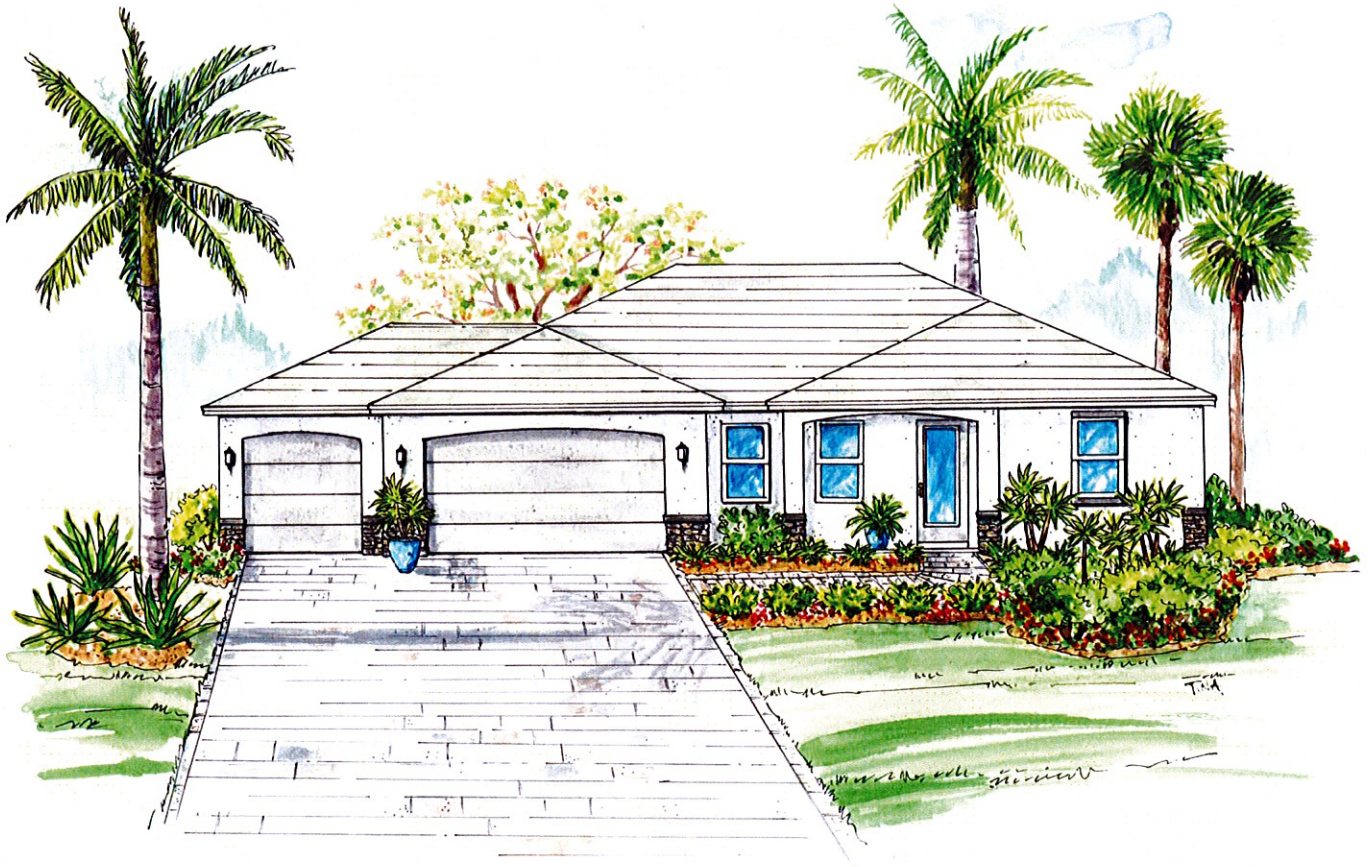
CHRISTOPHER ALAN HOMES

ChristopherAlanHomes.com | 239.800.2164



©2018 CHRISTOPHER ALAN HOMES. FEATURES, FLOOR PLANS, SQUARE FOOTAGES AND SPECIFICATIONS ARE APPROXIMATE AND SUBJECT TO CHANGE WITHOUT NOTICE AND MAY VARY FROM THE HOMES AS BUILT.

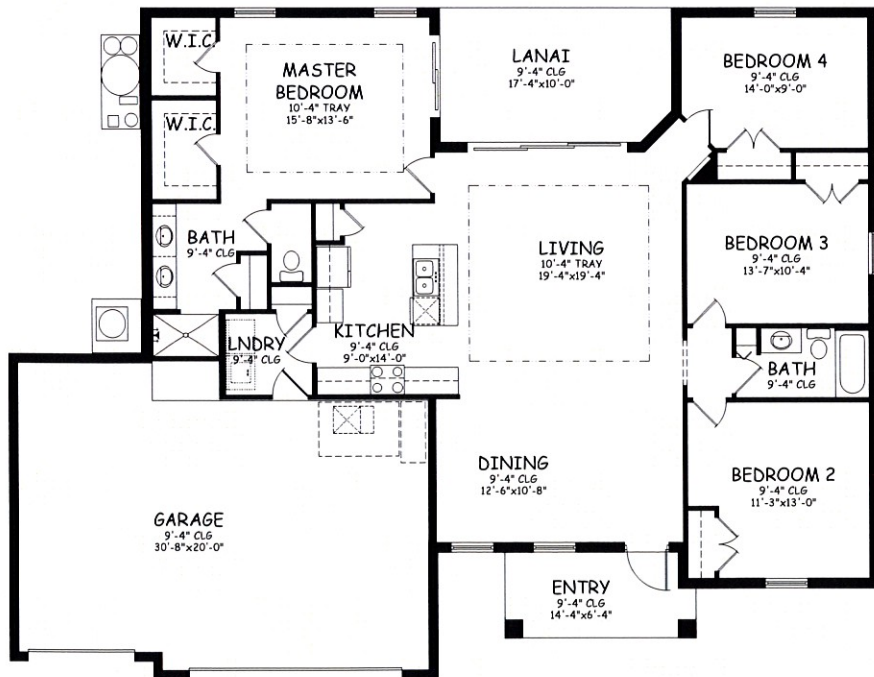
THE GRAND ST. AUGUSTINE



4 Bedroom, 2 Bath with 3-Car Garage

Square Footage

Air Conditioned	1,829 sq. ft.
Lanai.....	171 sq. ft.
Entry	87 sq. ft.
Garage	690 sq. ft.
Total Area	2,777 sq. ft.



CHRISTOPHER ALAN HOMES

ChristopherAlanHomes.com | 239.800.2164



©2018 CHRISTOPHER ALAN HOMES. FEATURES, FLOOR PLANS, SQUARE FOOTAGES AND SPECIFICATIONS ARE APPROXIMATE AND SUBJECT TO CHANGE WITHOUT NOTICE AND MAY VARY FROM THE HOMES AS BUILT.